



Brightness & color temperature adjustable panel light



Description

Brightness&color temperature adjustable panel light, it has the independent dimming and color temperature adjustable system,easy to connect and control,allow the people to create exactly the right atmosphere to improve performance and motivation.

Features

- 1.warm white to cool white color temperature adjustment 3000K-6500K.
- 2.brightness dimmable,smooth dimming with no flicker.
- 3.combine the controller and driver in one housing,easy to install and control.
- 4.work with 2.4G wireless remote control signal,quick response,high sensitivity.
- 5.Available in one to one,one to more connection which easily can be done by end users.





Specifications

Model	CCT	Color	LED Type	Lumen(lm) (±10%)	CRI	Beam angle	Power(W) (±10%)	Voltage (V)	Weight (Kg)	Current (A)	PF
	6000K	cool white		3547lm	>80	110°					
SC-PSD24DE6060-K45W	4000K	natural white	2835	3409lm	>80	110°	45W	AC 90-265V 50/60Hz	3.5	0.5	≥0.95
	3000K	warm white		3174lm	>80	110°					

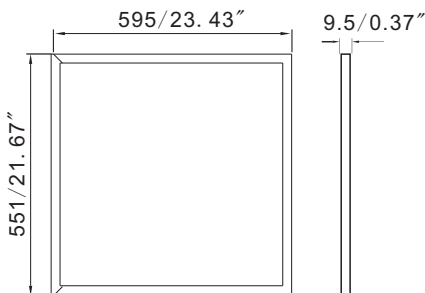
Applications

Dimming Series Square Panel Light can be used in hotels, meeting rooms, factories, offices, commercial purposes, residential, institution buildings, schools, hospitals, places which needs energy saving and high color rendering index lighting.

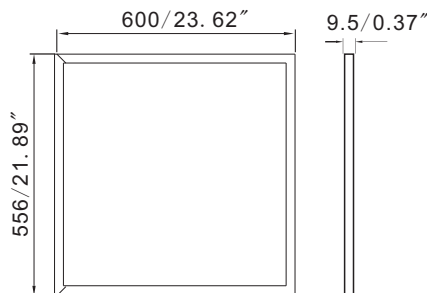


Dimensions (Unit: mm/inch)

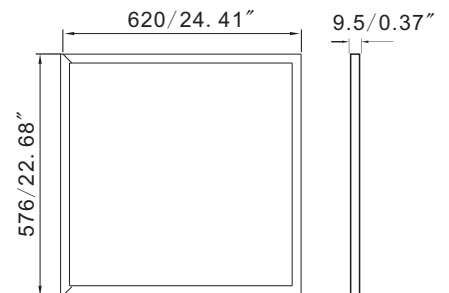
595*595mm



600*600mm



620*620mm



All dimension tolerance is ± 0.5 mm unless otherwise noted.



2.4 G Wireless Constant-current Dimming Driver



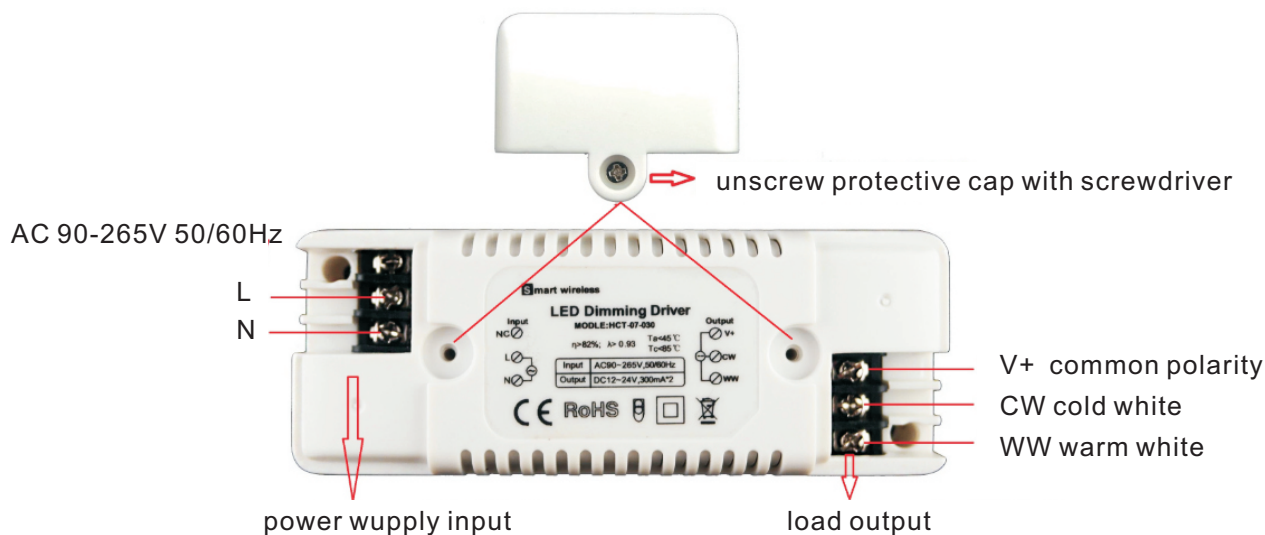
Technical parameters of Driver

Input voltage	AC90-265V	Frequency	50/60Hz
Standby power consumption	≤0.9W	Working temperature	-10~45℃
Output voltage	DC12-42V	Output currentI	≤1200mA*2CH
Output power signal frequency	P≤45W	PWM dimming	700Hz
Power factor (PF)	≥ 0.93	Overall efficiency	>82%
Control mode	2.4GHz wireless remote control	Remote control distance	≤20M
Dimming range	1-100%(dimming)	Power supply solution	Isolating power wupply

Technical parameters of Wireless Touch Remote Control

Working temperature	-20~60℃	Power supply voltage	4.5V (AAA*3PCS)
Standby current	14uA	Emission current	17mA
Standby power	0.063mW	Emission	0.0765W

Interface Explanation





Touch Remote Control instruction

- Connect the driver and panel light, then light up the lamp, ensure there is no short-circuit between wire connection before power on;
- press key function of 2.4G wireless RF remote control as below:



Key	Description	Remark
On	can open the lamp at any state	
Off	can turn off the lamp at any state	
Mode	mode selection key, press one time, the light color change one time.	2 modes
Bright/speed+	brightness+ key at static mode speed+ key at dynamic mode	with continuous receiving function
Brightness/speed-	brightness-key at static mode speed- key at dynamic mode	with continuous receiving function
Touch CCT ring	In the state of power-on, select on the wheel, then the lamp will illuminate as the selected color.	
CCT sense light	the sense light will light corresponding color when press color ring	

Remark: if there isn't any operation in 10s, the touch remote controller will enter into sleeping state; if need to awaken remote controller, please press any key or color ring.

mode key function as below:

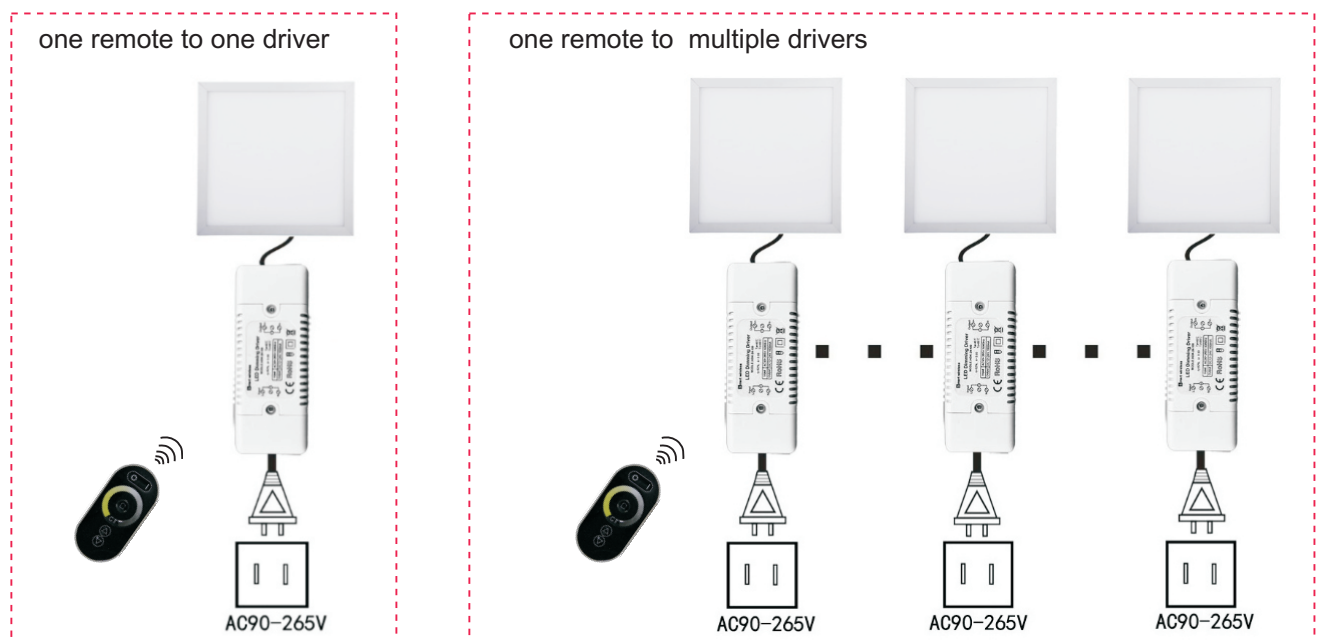
no.	Sample color	Remark
1	cold and warm white in static state (50%)	the brightness is adjustable, and speed is unadjustable
2	cold white, warm white alternating change	the brightness is unadjustable, and the speed is adjustable.



● How to match the remote

1. Connect the driver to the panel light firstly, long press the "mode" key of the remote controller before power on.
2. Power on the driver, the panel light will light up at 50% brightness, then release the "mode" key.
3. Long press "On" key on the remote, until the panel flash 3 times. Then the remote is matched successfully.
4. If one remote will connect to multiple drivers, just match the same remote to different drivers.

Typical application

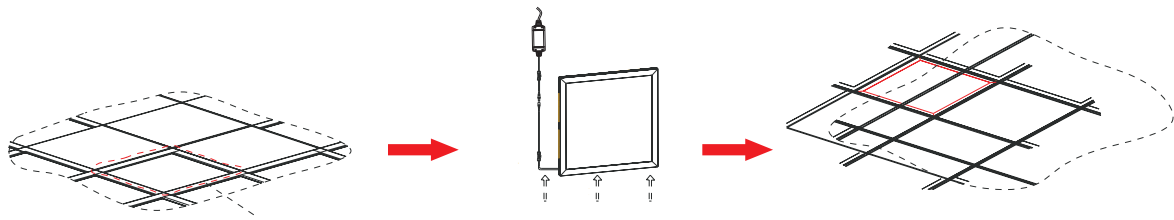


Remark: if remote controller is lost and the light is off; you can switch on/off power supplies 3 times to restart driver and light up the lamp(finish it in 5 seconds).



Installation Drawing

Schematic diagram for embedded installation

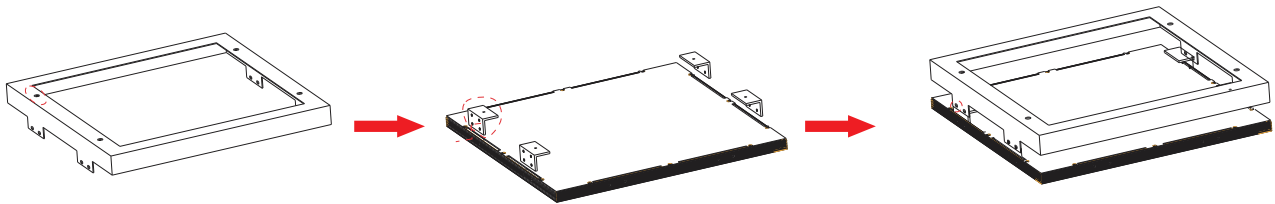


1. move away ceiling plaster slab, then arrange the wire.

2. put through the panel light along ceiling's diagonal and then wiring.

3. fix the panel light to suitable place

Schematic diagram for ceiling installation

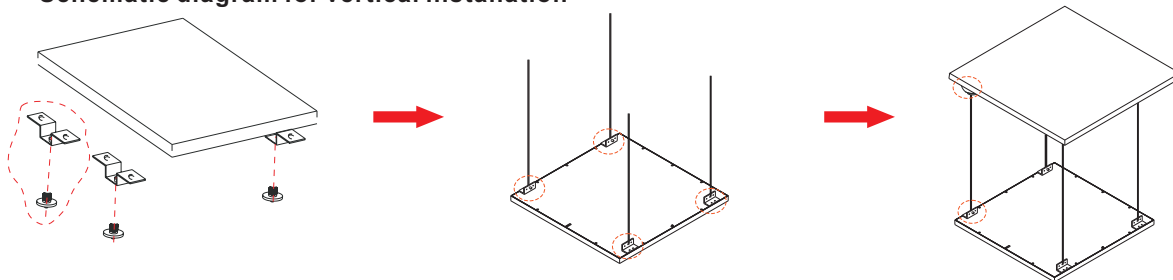


1. fix the upper frame

2. install connection fittings

3. laterally connect panel light to upper frame by screws

Schematic diagram for vertical installation



1. install the hanging fixed block in order.

2. set up hanging fittings stainless steel rope

3. fix the rope on suitable height by using lifter.

! Notice

1. Please read the specification first, to make sure the service environment matches the condition in the specification before using.
2. Please confirm the applicable power supply before using.
3. Make sure the switch of product is off before connect to the power supply to prevent electric shock.
4. Operation against rules may damage your property even harm to your personal safety.
5. Preliminarily estimate required quantity of LED panel lights, then according to the power rating of single panel light to figure out the total power and design power supply plan.
6. Dangerous high voltage, Non-professionals are not allowed to maintain the products.
7. If the exterior flexible cable or wire is damaged, it must exchange by the supplier, its agent or other similar qualified personnels to avoid dangers.